



FarmOnline+

for the farm manager





Why FarmOnline+ for the farm manager

FarmOnline+ gives the farm manager on pig farms the following advantages:

- Trustworthy, validated, and filtered data from all sections and houses on the farm.
- Possibility to initiate quick action in case of irregularities.
- Improved production and business development based on reliable real-time data.
- Efficient implementation of management strategies at the section and house level.
- Software is always updated.
- Maximum level of data security.

Do not spend time and energy on data collection

Due to the systematic electronic transmission system, no time is spent collecting data. Instead, the time can be spent analyzing data and caring for the animals.

No manual processes!

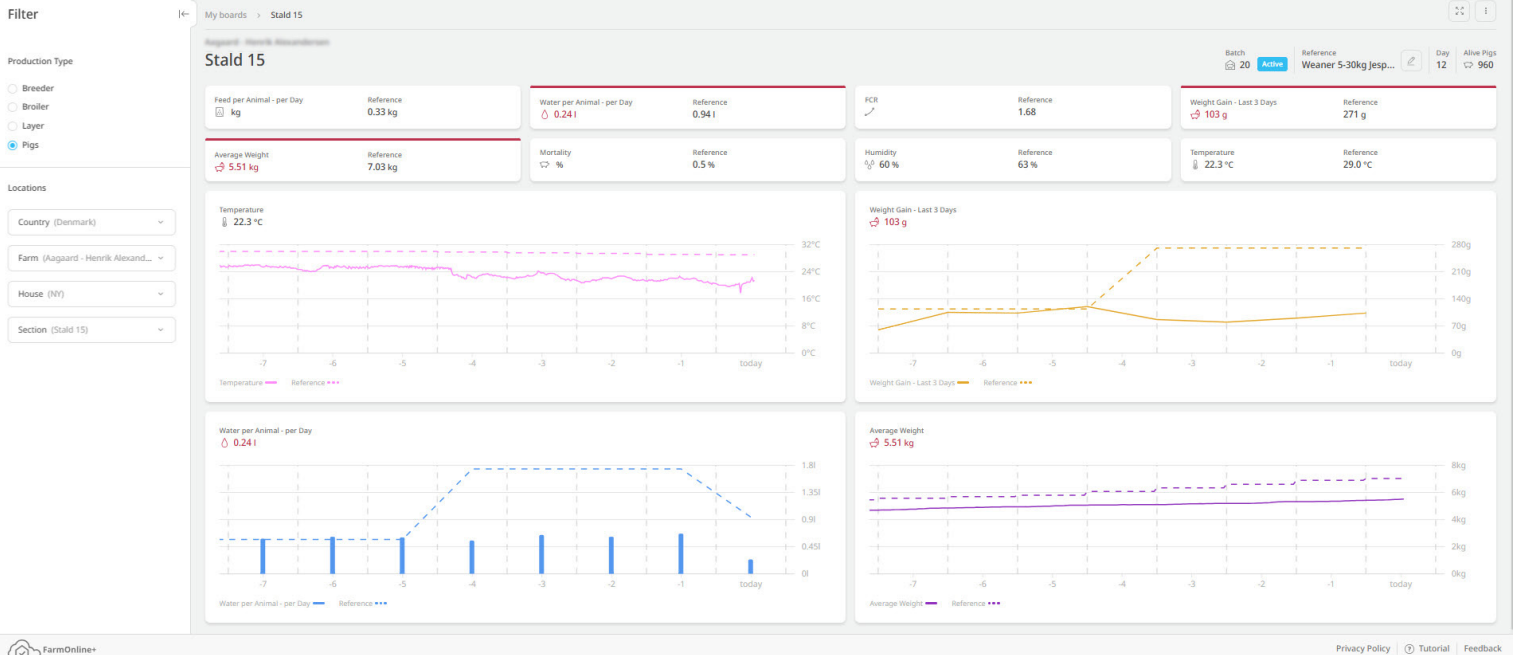
Data is transferred directly from the controller to the farm manager in his office. Real-time data is not influenced by manual processes that can cause errors and lower the validity.

Data from houses without BlueControl controllers

If the farmer manages houses without a SKOV climate and production controller, relevant data from these houses is collected via a sensor gateway. Thus, the farm manager can get a complete overview of all sections and houses on the farm.

Configure your FarmOnline+ system

FarmOnline+ is a bundle of apps that gives an overview at section, house and farm level, enabling the farm manager to optimize animal welfare and production.



Boards

Boards enable the farm manager to quickly get an overview of production status at the house level, investigate issues, and narrow down problems by monitoring the most critical key values.

The overview can be tailored to visually display information according to specific needs.

Filter

Q Search

Filter

Pigs 8 Locations Active batches Week 0

Export

Production types

Pigs

- Breeder
- Broiler
- Dairy
- Layer
- Pigs

Locations

8

Countries (2 of 2 selected)

Farms (4 of 22 selected)

Houses (1 of 9 selected)

Sections (1 of 1 selected)

Batch details Week 0, Active

Columns 8

Batch rules 0

Location	Average Weight	Weight Gain - Last 3 Days	Number of Weighings	Water per Animal - Last 24h	Temperature Setpoint	Temperature	Ventilation Requirement (0-100)
GL Stald 9 17 Active	5.24 kg 5.69kg	47 g 114g	484	-1 0.57l	23.1 °C	23.2 °C 30.0°C	4.4 %
GL Stald 8 16 Active	5.10 kg 5.69kg	-1,477 g 114g	160	-1 0.57l	25.2 °C	25.1 °C 30.0°C	5.4 %
NY Stald 15 18 Active	4.95 kg 5.69kg	103 g 114g	539	-1 0.57l	25.6 °C	25.3 °C 30.0°C	2.1 %
GL Stald 2 18 Active	6.17 kg 5.69kg	78 g 114g	170	-1 0.57l	23.1 °C	23.0 °C 30.0°C	9.6 %
NY Stald 14 18 Active	5.96 kg 5.69kg	72 g 114g	285	-1 0.57l	23.6 °C	23.3 °C 30.0°C	2.4 %
GL Stald 1 17 Active	4.74 kg 5.69kg	13 g 114g	567	-1 0.57l	25.6 °C	25.7 °C 30.0°C	6.8 %

Batches per page 10 20 30 40

1-6 of 6

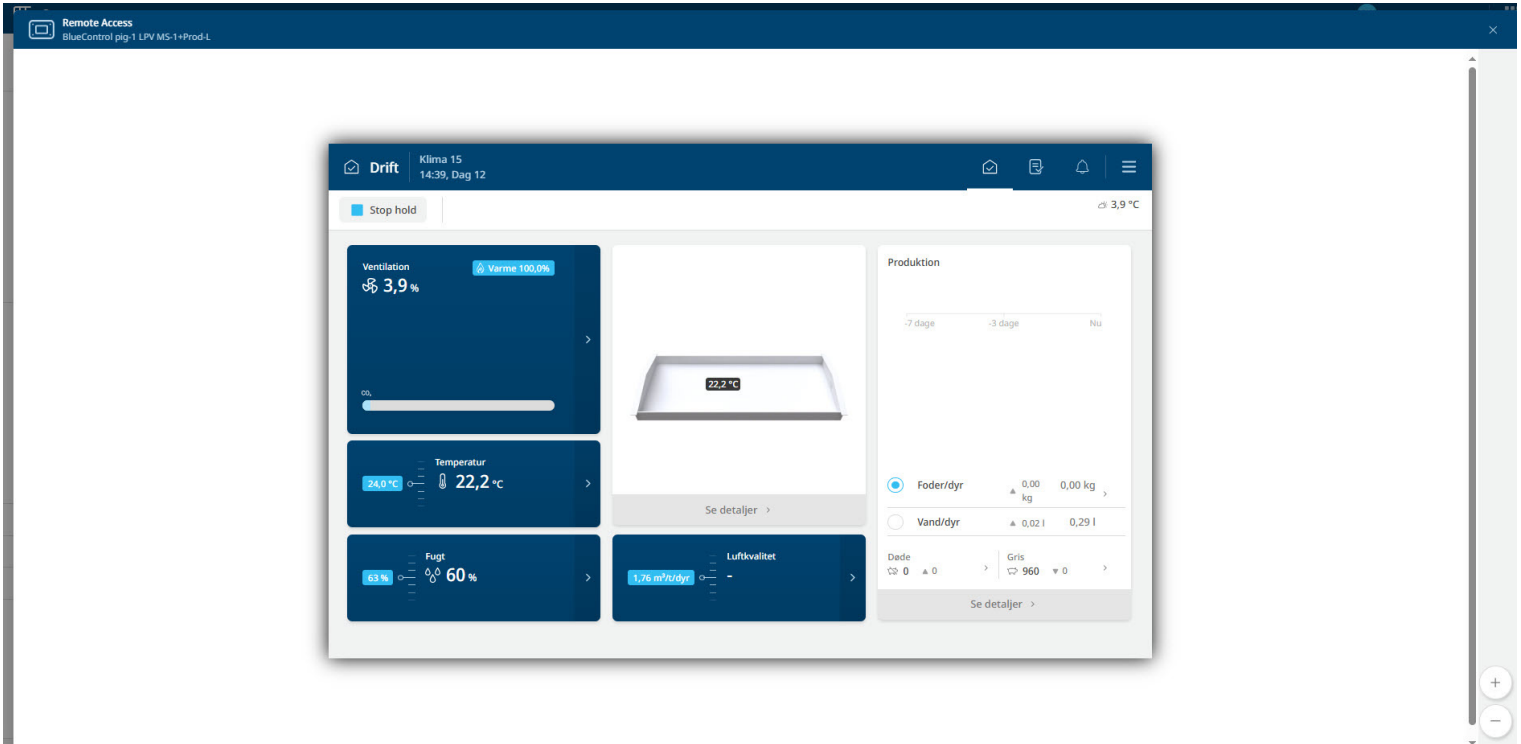
This report was generated January 31, 2025, 1:36:38 PM - Refresh report

Survey

The Survey module provides an overview of climate and production data for an unlimited number of sections or houses, enabling the farm manager to create applicable images for the best overview.

The farm manager can quickly assess the situation using 'traffic light' color codes and can proceed to other daily tasks if everything is green.

The module provides an excellent overview that helps the farm manager allocate his resources optimally, focusing on the houses that do not perform optimally and utilizing the knowledge from section to section or house to house.



Remote access

The Remote Access module provides the option to obtain a 100% identical display and operation of all climate and production controllers connected to the network.

The module provides the daily user of the climate and production controller the possibility to set all parameters of the controllers in the livestock house even when he is not physically present on the farm.

Remote Access also enables service technicians and supervisors to remotely troubleshoot, instruct, and guide daily users in the climate and production controller operations from the same user interface.

Overview

Filter

Farms (7 of 43 selected)

Houses (12)

Sections (35)

Alarm level: All

Status: 4

Categories: 4

Time period: Last 2 weeks

Search

7 locations All alarms All statuses All categories Last 2 weeks Clear sorting

Location	Descriptions	Activated	Acknowledged	Deactivated	Duration
	Dirty camera Alarm The camera "Klima 2 Ssi 16" is dirty.	12 days ago Jan 19, 2025, 03:01 AM GMT+1	—	—	12 days 10 hours 50 minutes Active
	Dirty camera Alarm The camera "Klima 2 Ssi 16" is dirty.	11 days ago Jan 20, 2025, 06:01 AM GMT+1	—	—	11 days 7 hours 50 minutes Active
	Dirty camera Alarm The camera "Klima 2 Ssi 16" is dirty.	10 days ago Jan 21, 2025, 06:01 AM GMT+1	—	—	10 days 7 hours 50 minutes Active
	Dirty camera Alarm The camera "Klima 2 Ssi 16" is dirty.	9 days ago Jan 21, 2025, 11:01 PM GMT+1	—	—	9 days 14 hours 50 minutes Active
	Dirty camera Alarm The camera "Klima 2 Ssi 16" is dirty.	8 days ago Jan 23, 2025, 04:03 AM GMT+1	—	—	8 days 9 hours 48 minutes Active
	Dirty camera Alarm The camera "Klima 2 Ssi 16" is dirty.	7 days ago Jan 23, 2025, 11:01 PM GMT+1	—	—	7 days 14 hours 50 minutes Active
	Dirty camera Alarm The camera "Klima 2 Ssi 16" is dirty.	6 days ago Jan 24, 2025, 07:01 PM GMT+1	—	—	6 days 18 hours 50 minutes Active
	Dirty camera Alarm The camera "Klima 2 Ssi 14" is dirty.	12 days ago Jan 19, 2025, 06:01 AM GMT+1	—	—	12 days 7 hours 50 minutes Active
	Camera lost connection Alarm The camera "Klima 2 Ssi 14" connection is lost.	10 days ago Jan 20, 2025, 07:52 PM GMT+1	—	10 days ago Jan 20, 2025, 07:54 PM GMT+1	0 minutes
	Dirty camera Alarm The camera "Klima 2 Ssi 14" is dirty.	10 days ago Jan 21, 2025, 02:01 AM GMT+1	—	—	10 days 11 hours 50 minutes Active
	Dirty camera Alarm The camera "Klima 2 Ssi 14" is dirty.	8 hours ago Jan 31, 2025, 05:01 AM GMT+1	—	—	8 hours 50 minutes Active
	Camera lost connection Alarm The camera "Klima 2 Ssi 13" connection is lost.	10 days ago Jan 20, 2025, 07:53 PM GMT+1	—	10 days ago Jan 20, 2025, 07:54 PM GMT+1	0 minutes
	Camera lost connection Alarm The camera "Klima 2 Ssi 13" connection is lost.	2 days ago Jan 29, 2025, 08:36 AM GMT+1	—	2 days ago Jan 29, 2025, 08:37 AM GMT+1	0 hours 1 minutes

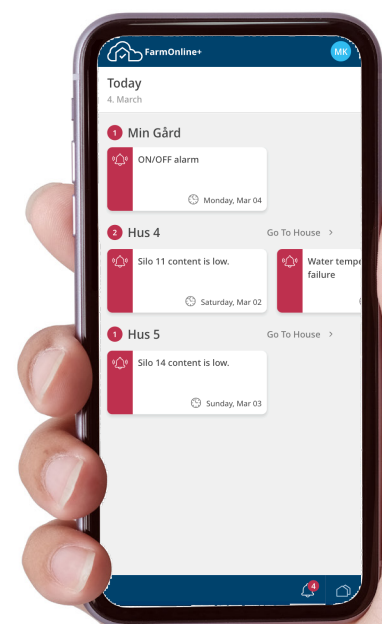
Alarms per page: 10 20 30 40

1-20 of 599

Alarm

The well-being of the animals in livestock houses is of the utmost importance. Quick and efficient action is required in case of a ventilation system failure or any issues with the feed supply. It is crucial to ensure the welfare and productivity of the animals.

The FarmOnline+ Alarm module provides the farm manager with a quick overview of the alarm's type and location. This information helps the manager take appropriate action to address the issue.



Silo

Overview Maintenance Notifications Niels Henrik L...

Default Tab

Filter

Search

Filter: 11 companies All fill levels Clear sorting

Export as CSV

Company	Farm	Location	Silo	Status	Fill level	Fill level forecast				Capacity	Available	Feed type	Estimated time to empty
						Today	+1	+2	+3				
PIG CUSTOMER DEMO	Demo Pig Farm 1	House 1	Silo 31	77%	10.01 t 01/31/2025 11:59 AM (+00:00)	7.960 t	3.761 t	Empty	Empty	13 t	2.99 t	1	02/02/2025 9:29 PM
PIG CUSTOMER DEMO	Demo Pig Farm 1	House 1	Silo 32	60%	8.36 t 01/31/2025 11:59 AM (+00:00)	6.878 t	3.843 t	0.808 t	Empty	14 t	5.64 t	1	02/03/2025 6:23 AM
PIG CUSTOMER DEMO	Demo Pig Farm 1	House 2	Silo 33	18%	2.71 t 01/31/2025 11:59 AM (+00:00)	1.307 t	Empty	Empty	Empty	15 t	12.29 t	1	02/01/2025 10:54 AM
PIG CUSTOMER DEMO	Demo Pig Farm 1	House 2	Silo 34	21%	2.13 t 01/31/2025 11:59 AM (+00:00)	0.787 t	Empty	Empty	Empty	10 t	7.87 t	1	02/01/2025 6:51 AM
PIG CUSTOMER DEMO	Demo Pig Farm 2	House 3	Silo 35	64%	5.74 t 01/31/2025 11:59 AM (+00:00)	5.740 t	5.740 t	5.740 t	5.740 t	9 t	3.26 t	1	—
PIG CUSTOMER DEMO	Demo Pig Farm 2	House 3	Silo 36	65%	8.51 t 01/31/2025 11:59 AM (+00:00)	7.245 t	4.652 t	2.060 t	Empty	13 t	4.49 t	1	02/03/2025 7:04 PM
PIG CUSTOMER DEMO	Demo Pig Farm 2	House 4	Silo 37	53%	6.3 t 01/31/2025 11:59 AM (+00:00)	5.135 t	2.749 t	0.364 t	Empty	12 t	5.7 t	1	02/03/2025 3:39 AM
PIG CUSTOMER DEMO	Demo Pig Farm 2	House 4	Silo 38	20%	1.58 t 01/31/2025 11:59 AM (+00:00)	0.102 t	Empty	Empty	Empty	8 t	6.42 t	1	02/01/2025 12:48 AM
PIG CUSTOMER DEMO	Demo Pig Farm 3	House Finisher 1	Silo 41	12%	1.2 t 01/31/2025 11:59 AM (+00:00)	Empty	Empty	Empty	Empty	10 t	8.8 t	1	01/31/2025 8:01 PM
PIG CUSTOMER DEMO	Demo Pig Farm 3	House Finisher 1	Silo 42	16%	1.75 t 01/31/2025 11:59 AM (+00:00)	0.454 t	Empty	Empty	Empty	11 t	9.25 t	1	02/01/2025 4:05 AM

Silos per page: 10 20 30 40

1-10 of 62

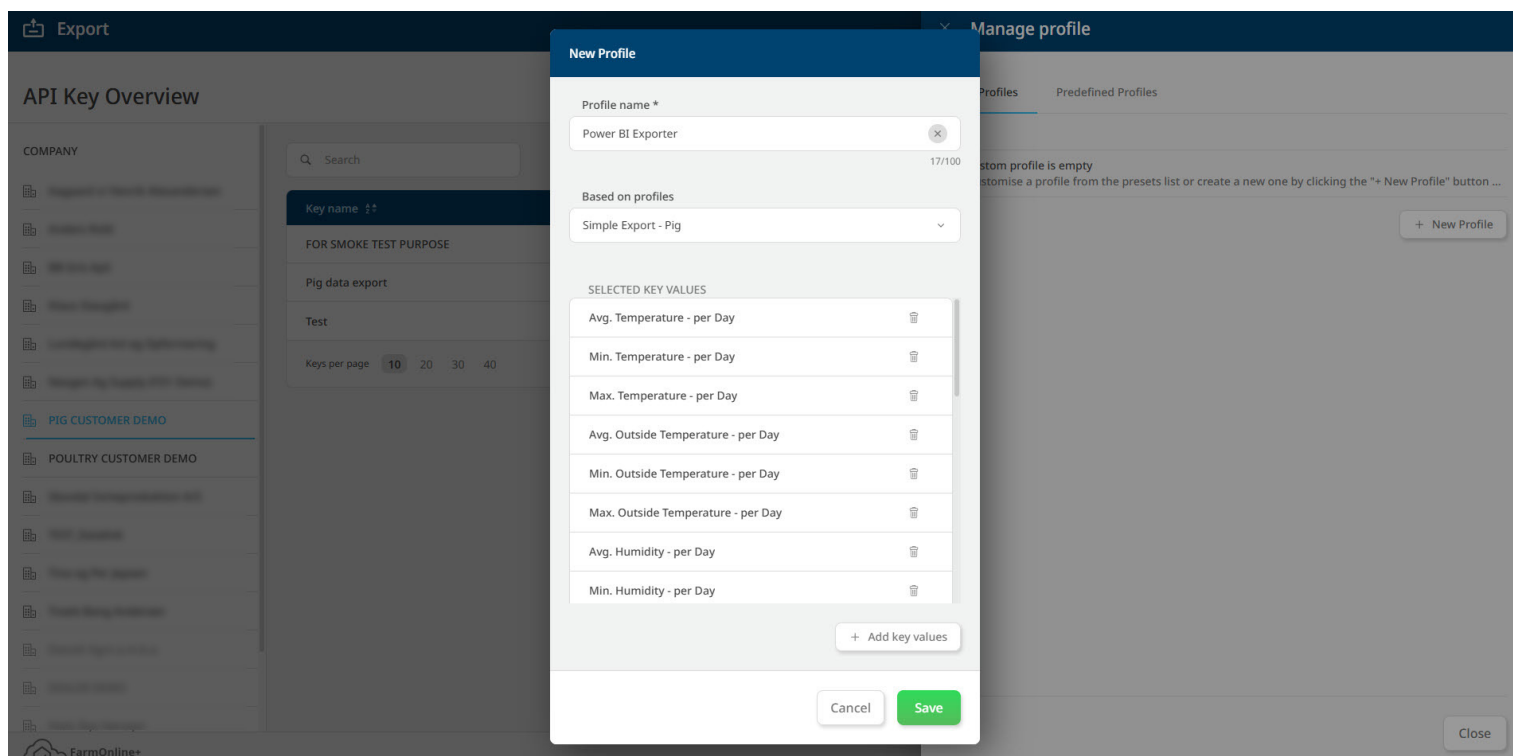
This report was generated January 31, 2025 at 1:52:21 PM - Refresh report

FarmOnline+ Privacy Policy Tutorial Feedback

Silo management

The Silo app is a tool that helps farm managers keep track of their feed inventory. The app provides an overview of all connected silos, showing their current fill levels and forecasting future levels for upcoming days. It also estimates the time when the silos are emptied.

A graphical representation of the fill level history depicts the changes over time, including when feed is added or withdrawn. This information is useful for planning feed-ordering activities.



Exporting data

If the farm is integrated into a larger value chain that includes other farms, feed mills, processing plants, etc., these units depend on the farm's data to optimize their operations.

The export modules allow the farm's data to be shared with these units, optimizing the value chain overall.

Default Report

Default Report

Manage Reports

Settings

Sections (6 of 18 selected)

Batches

Stald 15

Batches 2 of 20 selected

Stald 1

Batches 0 of 17 selected

GL

No batches available 0 of 0 sel...

NY

No batches available 0 of 0 sel...

Stald 2

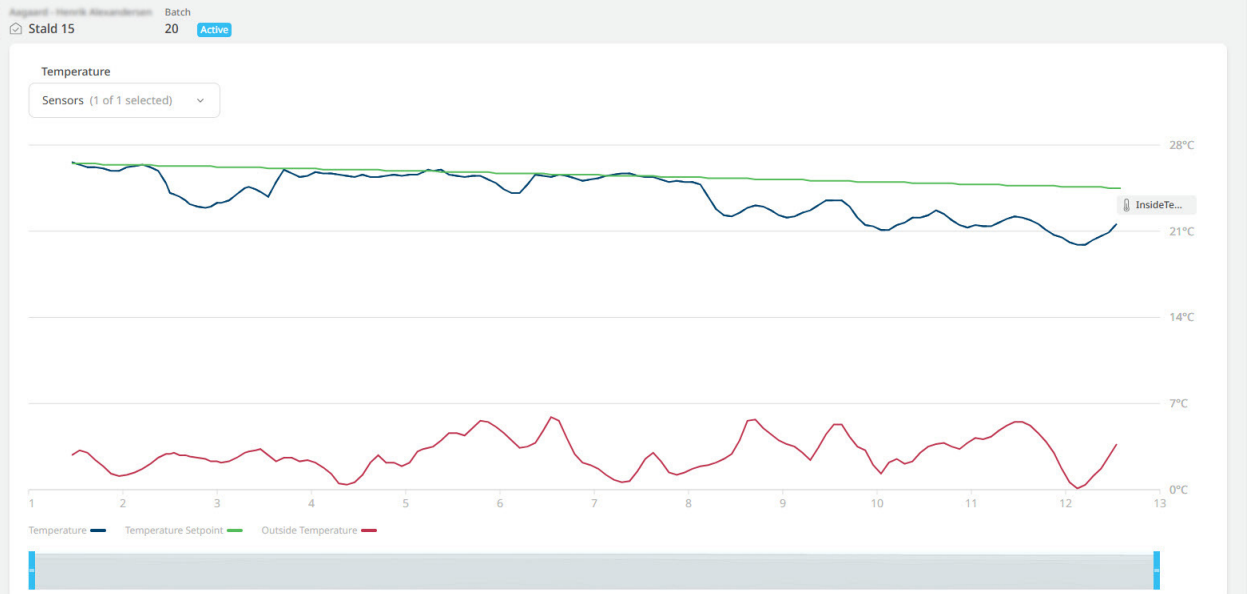
Batches 0 of 18 selected

Stald 8

Batches 0 of 16 selected

Stald 9

FarmOnline+



Privacy Policy | Feedback

Analytics

If there are any deviations from the desired climate or production results, the farm manager can examine the figures and further analyze them using the Analytics app.

The app enables the farm manager to analyze climate data, including temperature, humidity, CO₂, and ammonia levels.

It is possible to compare the data to historical data or references from breeding companies.

Thus, the analysis can focus on optimizing growth through optimum feed utilization.

SKOV A/S

Hedelund 4 • 7870 Roslev • Denmark
T: (+45) 7217 5555

SKOV Asia Ltd.
PB Tower • 10110 Bangkok • Thailand
T: (+66) 2 382 3031-2

SKOV North America, Inc
160 Clairemont Avenue, Suite 200 • Decatur, GA 30030 • USA
T: +1 (678) 954 5743

SKOV Technical Services (Tianjin) Co., Ltd.
斯科弗技术服务(天津)有限公司
天津市武清开发区
T: 电话: (+86)-131-6178-4389

E: info@skov.com

